

Hot water

These are the most common devices for making hot water in Austrian rental flats. Which is your system?



Large and small electric boiler. Inside the tank of these devices the water is kept at a set temperature. If some hot water is consumed, cold water refills the tank automatically and is heated up. Heating water with electricity is much more expensive than using gas or district heating. The costs are paid with the **electricity bill**.



External hot water supply (often coming from a central heating system in the basement of the house). Only the meter measuring how much water has been consumed is inside the flat. The cost is a part of the **heating bill or the utility cost bill**.



Combined gas heater (heating and hot water processed in one device) and **district heating flow heater**. Inside these devices the water is heated up as it is led past a heat source in thin pipes ("heated in flow"). This heat source is either a small tank that is itself filled with hot water (from the district heating) or burning gas. Often, one has to wait for a little while until the hot water reaches the tap (first comes cold water). The costs are a part of the **gas or district heating bill**.

Tipps

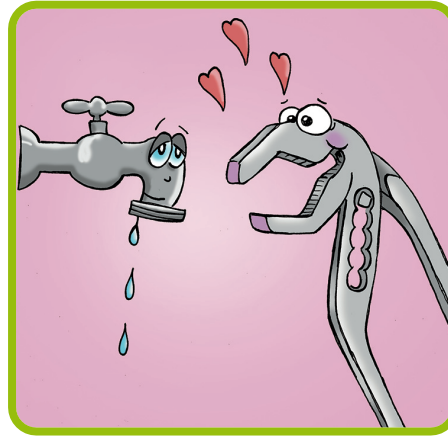
Baths and Showers

Taking a bath or an extended shower is very pleasant but unfortunately also expensive. A long shower (about 15 minutes) or a full bath can cost up to one Euro. Adding up over the year, that's quite something – especially with several family members! Therefore: Bathe rather seldom and limit your showers to five minutes. Have an eye on your children, too!



Dripping tap? Expensive!

A dripping tap always means a waste. It is especially annoying if hot water leaks out. This can easily result in high costs because heating up the water is expensive! Therefore: If a tap is faulty it has to be repaired immediately!



*** Especially Important if you have an electric heater ***

Electric Boiler – “The Big One”

The electric boiler is often the greatest electricity eater in the household. Choose setting **e** or **..**. This will heat the water up to about 60°C. A common 200 liter boiler (see the illustration on the first page) will thus allow four people to take a comfortable shower without running out of hot water. Unfortunately, some (cheap) boilers do not have a turning knob to adjust the temperature. However, a plumber can **open the device** and is often able to improve the setting.



Electric Boiler – “The Small One”

To avoid the water being kept hot for 24 hours per day, it is the best to switch on the boiler only 15 minutes before using it and to turn it off again as soon as it is hot.

If this is too complicated, a timer may be used to turn the boiler off automatically at least during the nights. The timer is installed between the socket and the plug of the boiler. In a DIY store, it costs only a few Euros and pays off quickly with the electricity bill. Operation is very easy (if needed, ask at the DIY store. In the example above, all the little switches for the time between 20:00 and 08:00 are pulled up. This means that no electricity will be used by the boiler during these hours.

